

Clarinet in B $\flat$

Бог мой Ты скала моя

Ю. Пастернак  
Апп. А. Концевич

Andante Con Moto

a2

First staff of music, measures 1-4. The key signature has two flats (B $\flat$  and E $\flat$ ). The time signature is common time (C). The first two measures contain whole rests. The third measure begins with a mezzo-piano (*mp*) dynamic and contains a dotted quarter note G $\flat$ 4, an eighth note F $\flat$ 4, and a quarter rest. The fourth measure contains a quarter note E $\flat$ 4, a quarter note D $\flat$ 4, a dotted quarter note C $\flat$ 4, and an eighth note B $\flat$ 3.

Second staff of music, measures 5-6. Measure 5 is marked with a first ending bracket labeled '1' and 'tempo'. It contains a dotted quarter note G $\flat$ 4, a quarter rest, and a quarter note F $\flat$ 4. Measure 6 contains a whole rest.

Third staff of music, measures 7-10. Measure 7 contains a whole rest. Measure 8 contains a dotted quarter note G $\flat$ 4 and an eighth note F $\flat$ 4. Measure 9 contains a half note E $\flat$ 4. Measure 10 contains a quarter note D $\flat$ 4, a quarter note C $\flat$ 4, a dotted quarter note B $\flat$ 3, and an eighth note A $\flat$ 3.

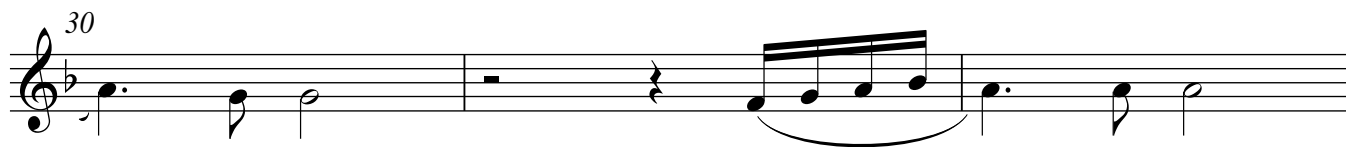
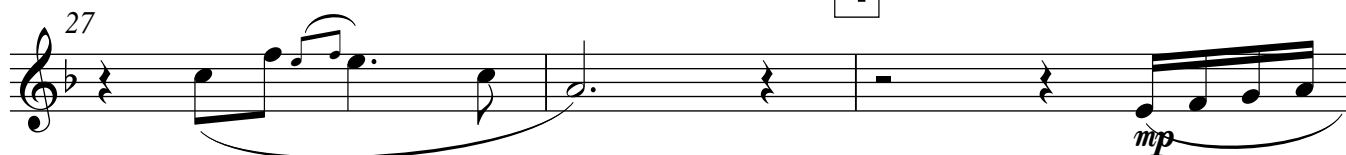
Fourth staff of music, measures 11-14. Measure 11 is marked with a second ending bracket labeled '2'. It contains a half note G $\flat$ 4 and a half note F $\flat$ 4. Measure 12 contains a whole rest. Measure 13 contains a whole rest. Measure 14 contains a whole rest.

Fifth staff of music, measures 15-18. Measure 15 contains a dotted quarter note G $\flat$ 4, an eighth note F $\flat$ 4, a quarter note E $\flat$ 4, a quarter note D $\flat$ 4, and a dotted quarter note C $\flat$ 4. Measure 16 contains a dotted quarter note B $\flat$ 3, a quarter note A $\flat$ 3, a quarter note G $\flat$ 4, and a dotted quarter note F $\flat$ 4. Measure 17 contains a dotted quarter note E $\flat$ 4, a quarter note D $\flat$ 4, a dotted quarter note C $\flat$ 4, and an eighth note B $\flat$ 3. Measure 18 contains a dotted half note G $\flat$ 4. Dynamics *mf* and *ff* are indicated below measures 15 and 18 respectively. The *a2* marking is above measure 18.

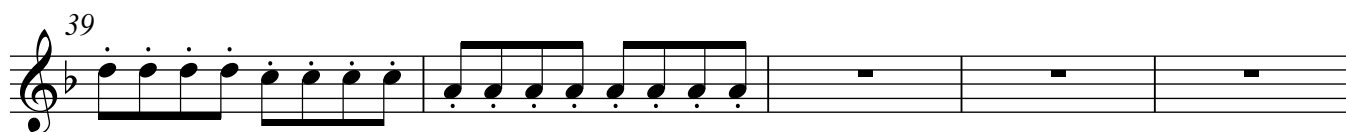
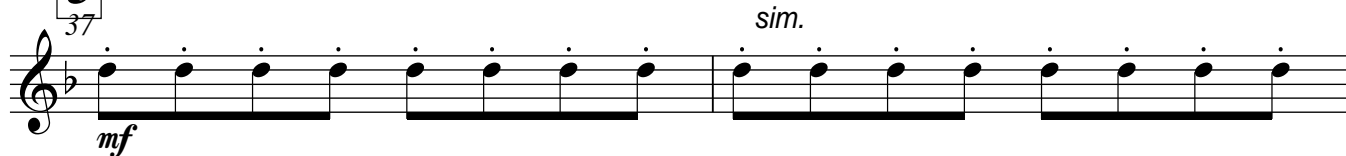
Sixth staff of music, measures 19-23. Measure 19 is marked with a third ending bracket labeled '3'. It contains a dotted quarter note G $\flat$ 4, an eighth note F $\flat$ 4, a quarter note E $\flat$ 4, a quarter note D $\flat$ 4, and a dotted quarter note C $\flat$ 4. Measure 20 contains a dotted quarter note B $\flat$ 3, a quarter note A $\flat$ 3, a quarter note G $\flat$ 4, and a dotted quarter note F $\sharp$ 4. Measure 21 contains a dotted half note E $\flat$ 4. Measure 22 contains a quarter rest, a quarter note D $\flat$ 4, and a dotted quarter note C $\flat$ 4. Measure 23 contains a dotted quarter note B $\flat$ 3, a quarter note A $\flat$ 3, and a dotted quarter note G $\sharp$ 4.

Seventh staff of music, measures 24-27. Measure 24 contains a dotted quarter note G $\flat$ 4, an eighth note F $\flat$ 4, a quarter note E $\flat$ 4, and a dotted quarter note D $\flat$ 4. Measure 25 contains a dotted half note C $\flat$ 4. Measure 26 contains a whole rest. Measure 27 contains a whole rest.

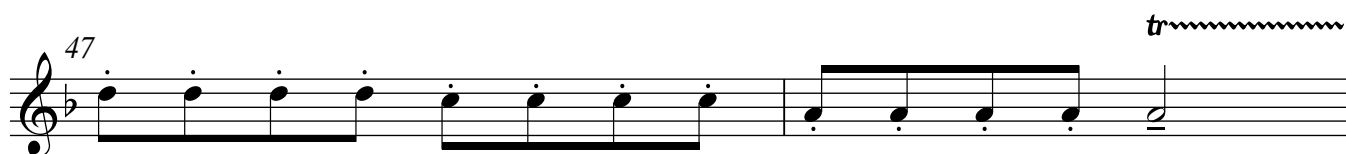
4



5



6



7

